

EXPEDITION CRUISES ————— 2026 / 2027

THE LAST UNTOUCHED FRONTIER

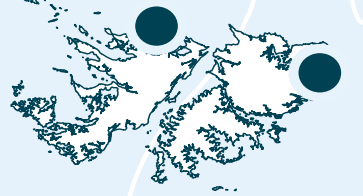
ANTARCTICA



90 00 S, 0 00 E



Saunders Island



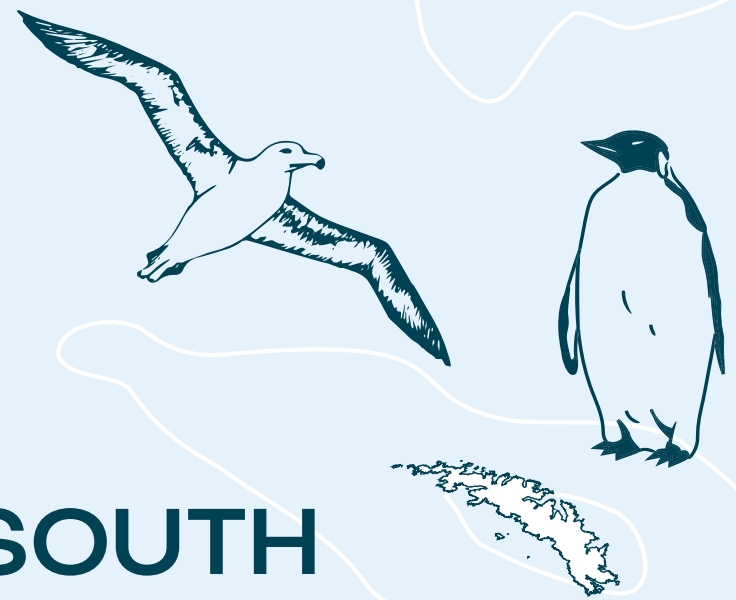
Port Stanley

FALKLAND ISLANDS

The Falkland Islands, located in the South Atlantic, are renowned for their rugged landscapes and rich ornithological diversity. Home to large colonies of magellanic, gentoo, and rockhopper penguins, as well as albatrosses and numerous seabird species, these islands offer unparalleled opportunities for birdwatching.

- Magellanic, gentoo and rockhopper penguins
- Port Stanley, West Point, Saunders Island

SOUTH ATLANTIC OCEAN

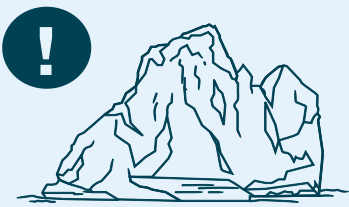


SOUTH GEORGIA

South Georgia is a remote, nearly inaccessible island in the southern Atlantic, renowned for its towering glaciers and thriving wildlife. Despite its isolation, it's home to thousands of penguins and seals —left behind by early 20th-century whalers. A true haven for untouched polar exploration.

- King penguins, albatross, cape petrels
- Shackletons grave

WATCH THE VIDEO



CALVING GLACIERS

From February to March

Elephant island

Deception Island

Gerlache Strait



WEDDELL SEA



Marguerite bay

Did you know?

The wreck of the Endurance, Ernest Shackleton's ship, was rediscovered in remarkable condition over a century later in 2022, lying nearly 10,000 feet below the surface.

PENGUINS

With around **12 million penguins** living on the Antarctic Peninsula and nearby sub Antarctic islands, these charismatic flightless creatures are easily the most abundant birds in Antarctica. Seven species of penguins live in this frozen wilderness, from petite **Adélie** and **chinstrap**

penguins to majestic emperor and **king** penguins, and each breed has its own charming characteristics. Seeing these iconic birds sliding across the ice on their stomachs or displaying their impressive courtship rituals creates special memories you'll cherish forever.



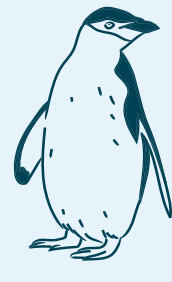
KING



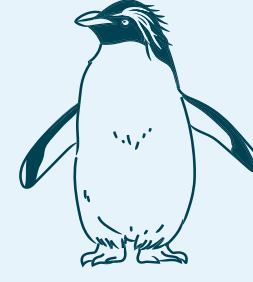
ADÉLIE



GENTOO



CHINSTRAP



MACARONI

12
MILLION

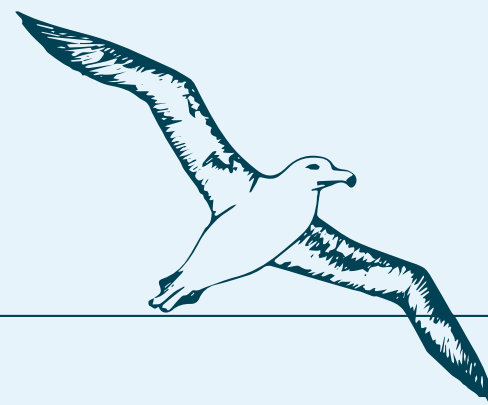
Antarctica — *Chinstrap, Gentoo, Adélie*
 South Georgia & Falklands — *Magellanic, Chinstrap, Gentoo, King, Macaroni, Rockhopper*

BIRDS

Whether you're a keen ornithologist or an all-round nature lover, Antarctica has a profusion of rare and special birds to admire. From **terns** and **petrels** to **skuas**, **shearwaters** and **shags**, over 45 species of birds inhabit the Southern Ocean.

Albatrosses are a common sighting, gracefully gliding on the ocean winds. With a wingspan of up to 3.35 metres, they are the largest flying birds in the world.

Antarctica — *Sheathbill, Petrels*
 South Georgia & Falklands — *Albatross, Petrels, Prions, Gulls, Blue-eyed Shag, Skua, Terns*

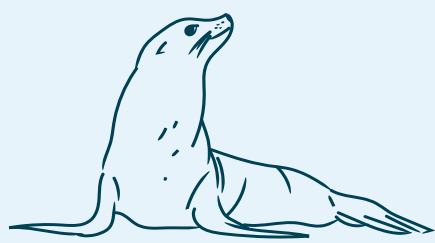


45
SPECIES

SEALS

Several different species of seal can be found in Antarctica: **Weddell**, **crabeater**, **leopard**, **fur** and **elephant seals**. These captivating

creatures spend most of their lives in the sea and are insulated from the freezing water by a thick layer of blubber.



FUR



ELEPHANT



LEOPARD

Antarctica — *Fur, Leopard, Crabeater, Elephant, Weddell*
 South Georgia & Falklands — *Fur, Elephant, South American Sea Lion*

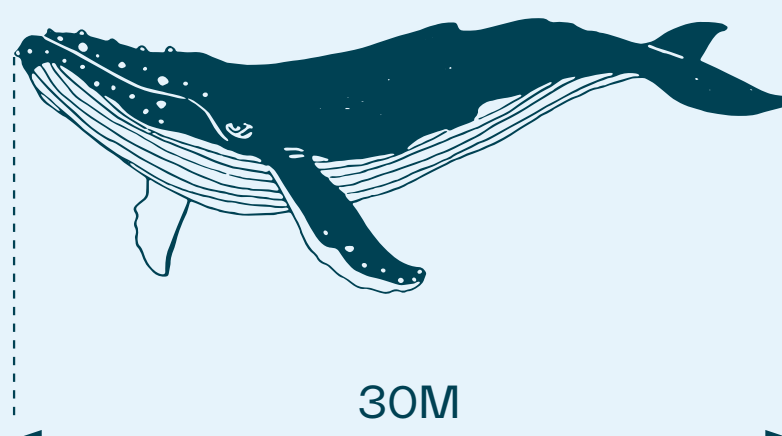
WHALES

Humpback whales are the most acrobatic of all the whales you may see in Antarctica. This remarkable creature weighs the same as 33 elephants and grows up to 30 metres long, making it the largest animal ever to have lived. They raise their backs high when swimming,

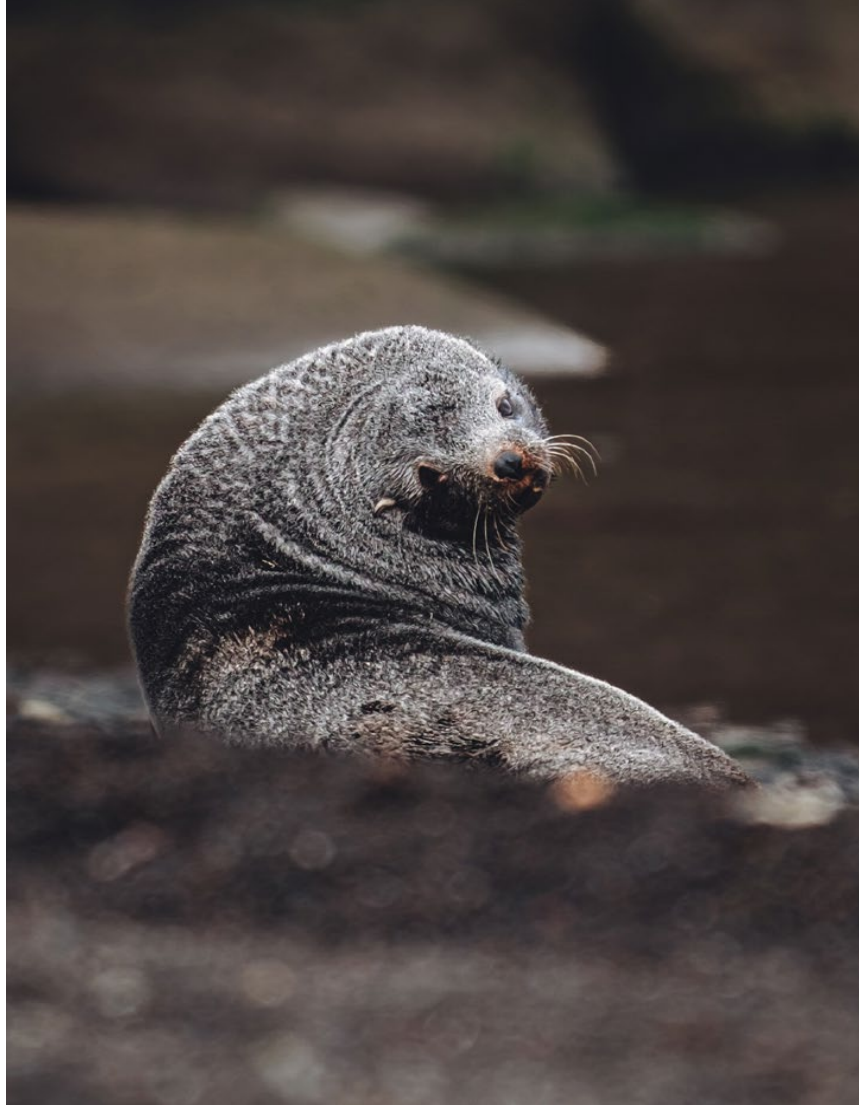
showing a distinctive curved dorsal fin, and when preparing to dive, raise their tail fluke above the water. Every humpback has tail fluke patterns as individual as a fingerprint. **Orca**, **Minke** and **Fin Whales** are also abundant in Antarctica.



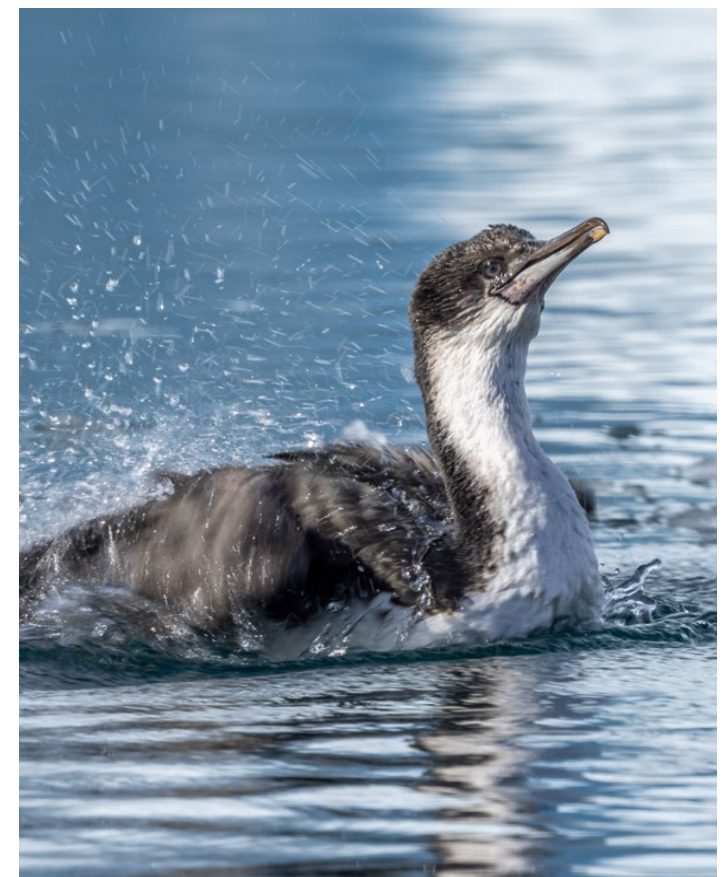
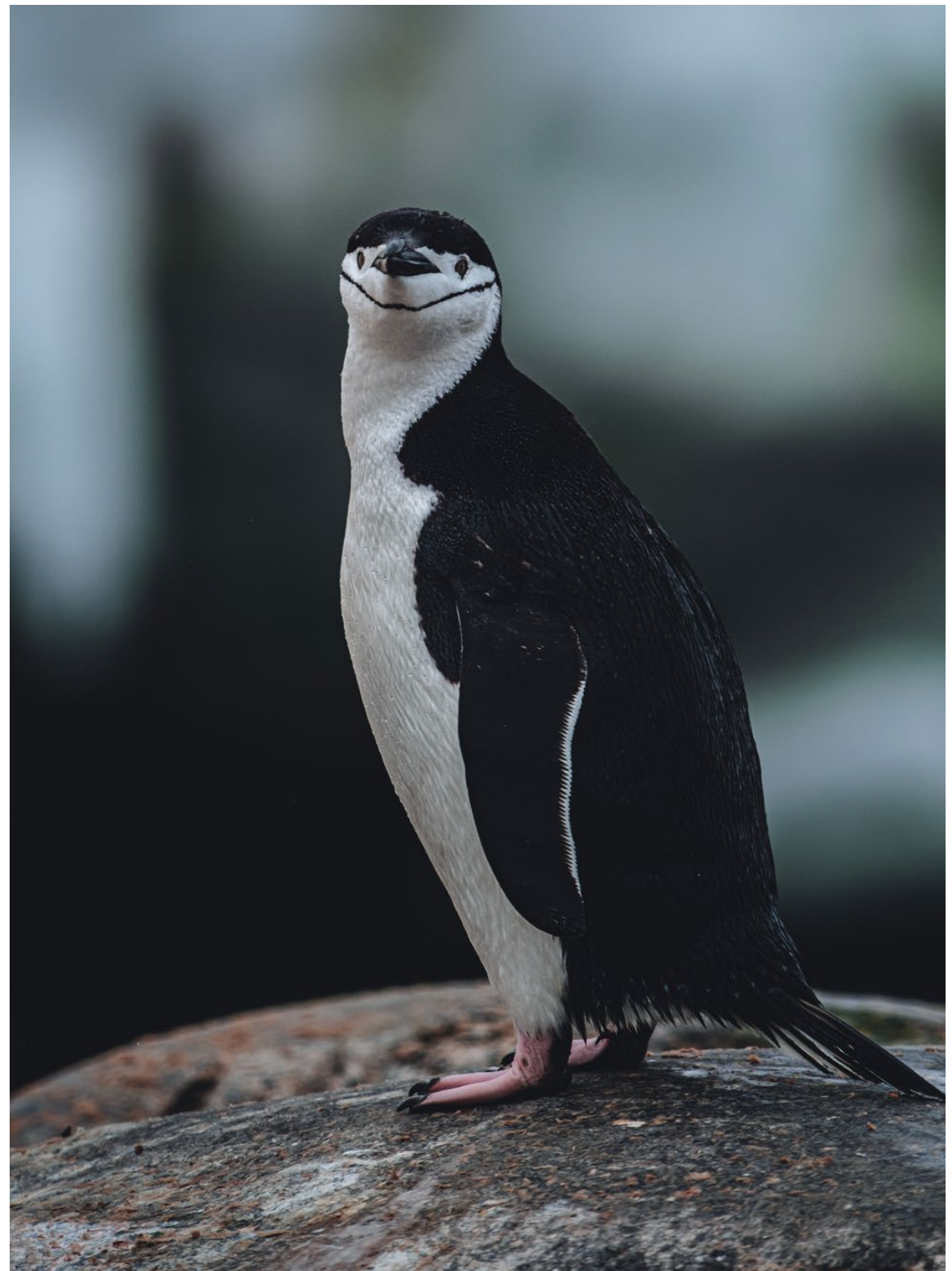
Antarctica — *Minke, Orca, Humpback and Fin*
 South Georgia & Falklands — *Humpback, Fin, Orca*



180 TONS
X 30



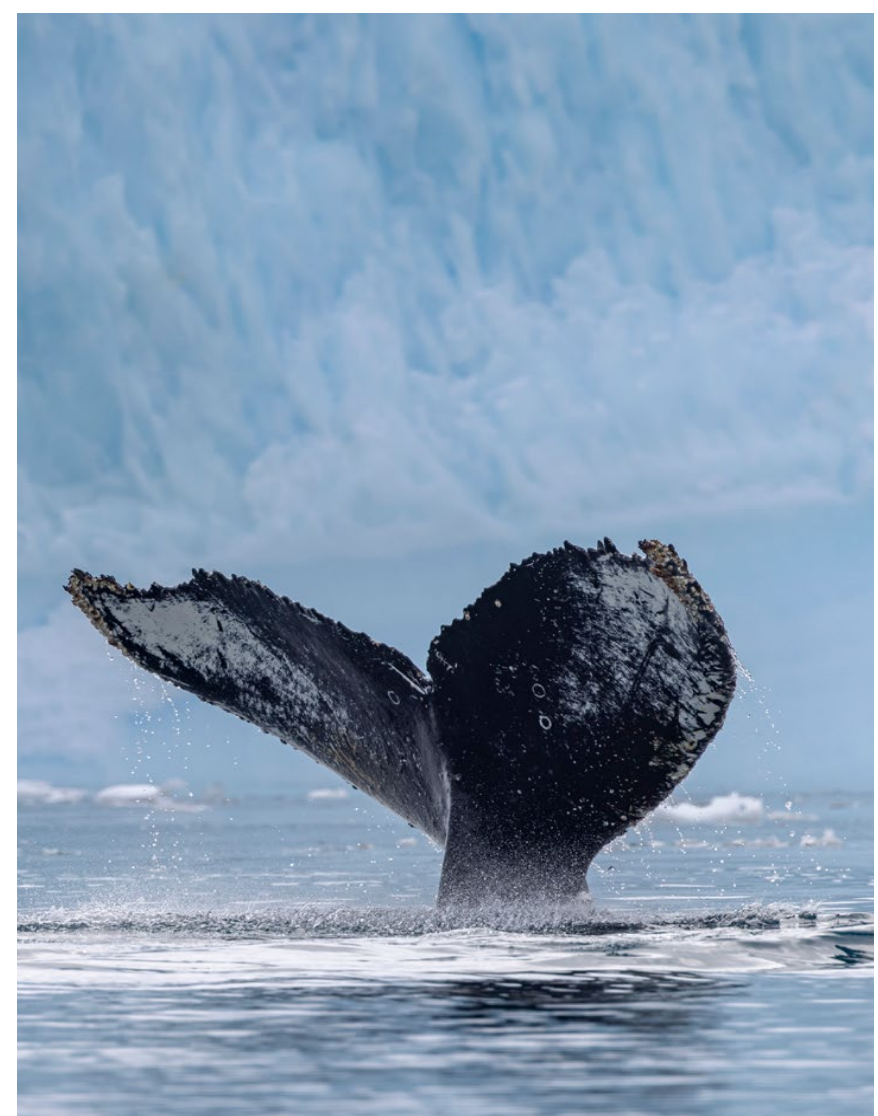
Antarctic fur seals were almost driven to extinction during the 18th century, when man hunted them for their skin and blubber. Today, they breed in dense colonies on beaches and rocks north of the pack-ice, where males fight for the right to rule a harem of females.



Gentoo penguins are the third-largest penguin species and can reach up to 81cm in height. They are easily recognisable with white patches above their eyes and a long tail which moves like a brush, hence their species name – Pygoscelis (brush-tailed).



Humpback Whales generally travel alone or in small groups, and are known for their incredible melodies and powerful, high breaches.



Did you know?

With a wingspan of up to 2.5 metres, black-browed albatross is adapted for long-distance gliding over the southern hemisphere ocean waters.



RESPONSIBLE WILDLIFE PHOTOGRAPHY

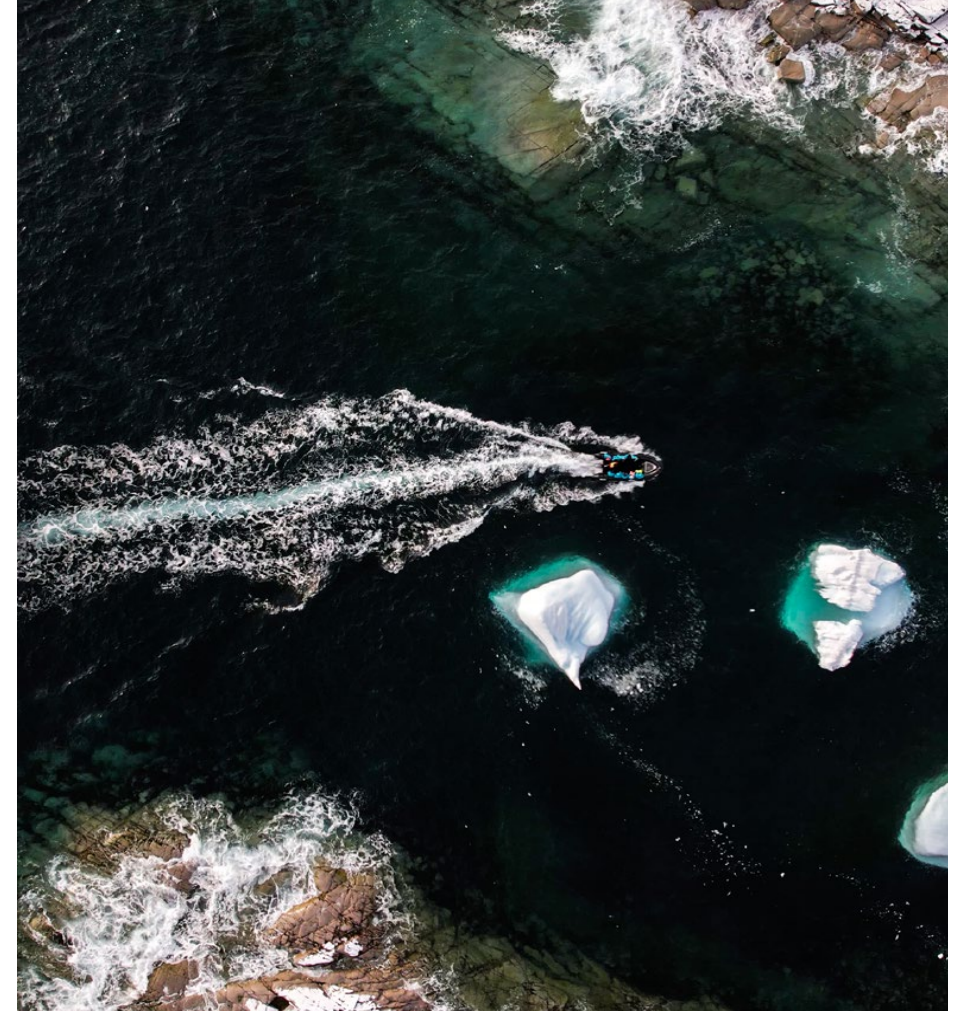
All pictures and videos of wildlife portraying animals in the wild were taken with a professional zoom lens from a distance required under environmental laws, ensuring the safety of both the wildlife and the environment.

ZODIAC BOATS

Our fleet of small, open-air Zodiac craft offer unique, in-depth experiences in the wild. Safe and sturdy, these specialised vessels are designed to withstand the harshest conditions.

LANDINGS

Landing ashore by Zodiac in the Antarctic or sub-Antarctic is always exciting. The weather can be unpredictable and your Zodiac ride may be ‘energetic’. Our highly trained expedition team will guide you safely to shore, where you can get close to the fantastic wildlife, ice formations, and mountains that await.



Did you know?

Zodiacs are large, heavy-duty inflatable boats. These tough rubber crafts are well suited for polar regions, and can easily push through icy Antarctic waters. Zodiacs have thick, flat undersides, which mean their landings are safe and stable, and they’re known for their exceptional maneuverability.

CRUISING

Sometimes the best way to see Antarctica’s spectacular landscapes and wildlife (especially if the wildlife has not left you any room on the beach – i.e. penguins!) is from the Zodiac with your expert Swan Hellenic expedition team interpreting the wonders.



Ushuaia Roundtrip

9 nights

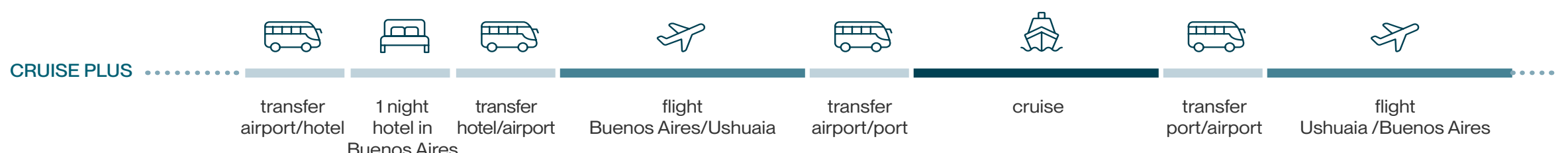
SH Diana		2026	12 - 21 Nov 21 - 30 Nov 30 Nov - 9 Dec
		2027	8 - 17 Jan 28 Jan - 6 Feb 6 - 15 Feb 15 - 24 Feb
SH Vega		2026	24 Nov - 4 Dec 4 - 13 Dec 13 - 22 Dec
		2027	4 - 13 Jan 13 - 22 Jan 2 - 11 Feb 22 Feb - 3 Mar 3 - 12 Mar

DAY VISITING

- 1 Ushuaia
- 2-3 At Sea
- 4-7 Antarctic Peninsula
- 8-9 At Sea
- 10 Ushuaia

Ports, port order and itinerary duration may vary, for the most up-to-date details see swanhellenic.com

ราคาเริ่มต้น ท่านละ **\$ 9,275**





Ushuaia Roundtrip

17 nights

SH Minerva 2027 6 - 23 Jan

DAY VISITING

- 1 Ushuaia
- 2 At Sea
- 3 West Point Island, Saunders Island
- 4 Port Stanley
- 5-6 At Sea
- 7-9 South Georgia and the South Sandwich Islands
- 10 At Sea
- 11-15 Antarctic Peninsula
- 16 At Sea
- 17-18 Ushuaia

Ports, port order and itinerary duration may vary, for the most up-to-date details see swanhellenic.com

ราคาเริ่มต้น ท่านละ **\$ 20,700**

CRUISE PLUS

- transfer airport/hotel
- 1 night hotel in Buenos Aires
- transfer hotel/airport
- flight Buenos Aires/Ushuaia
- transfer airport/port
- cruise
- transfer port/airport
- flight Ushuaia /Buenos Aires

WHAT'S INCLUDED

	CRUISE PLUS
Charter flights for cruises starting or ending in Ushuaia	✓
Group return transfers from airport to cruise port and to the hotel	✓
One night pre-cruise accommodation with breakfast in a 4/5-star hotel	✓
Your selected stateroom	✓
All meals onboard	✓
Complimentary hot & cold beverages, beer, wine & spirits any time throughout your cruise	✓
24-hour room service	✓
Lecture programs by expedition team and guest speakers	✓
One selected shore excursion per port of call	✓
All expedition landings	✓
Entry level WIFI (upgraded packages available)	✓
Gym, sauna, pool	✓
24/7 self service laundry	✓
Waterproof backpack and refillable water bottle, yours to keep	✓
Branded parka, yours to keep and use of rubber boots	✓
Memory Package	✓
Onboard gratuities & port taxes	✓

WILDLIFE ————— 2026 / 2027

